

ELEKTRA®

ControlTec Smart SMC

ELEKTRA ControlTec Smart SMC is a control device intended for snow and ice protection of heating systems. The controller features an innovative automatic functionality of the heating power adjustment for the moisture sensor's heater, based on current weather conditions, with optional optimization of the operational characteristics. Full remote control over the system is possible due to the built-in Ethernet port and WiFi module.

SOLUTIONS
FOR EVERYONE

With appropriate connection of the ETOG-56T and ETOR-55 moisture detectors, as well as the ETF-744 temperature sensor, simultaneous and independent control over two various heating zones becomes possible, such as e.g. gutters and garage driveway.



ETOG-56T
moisture detector with an integral temperature sensor and ETOK-T installation tube

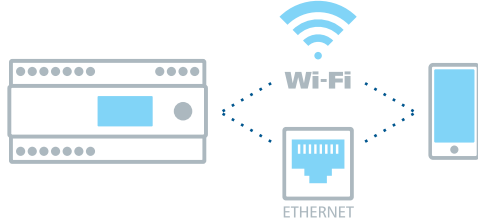


ETOR-55
moisture detector



ETF-744/99
temperature sensor

The controller features the WiFi module and Ethernet port for easy software update and remote operation via a web browser, using a user or installer account.



An additional advantage of the device is the feature to modify the characteristics of the moisture detector heater's output power depending on the ambient temperature, which enables even better adjustment of the controller's operation to the specific ambient environmental conditions present on site of operation.

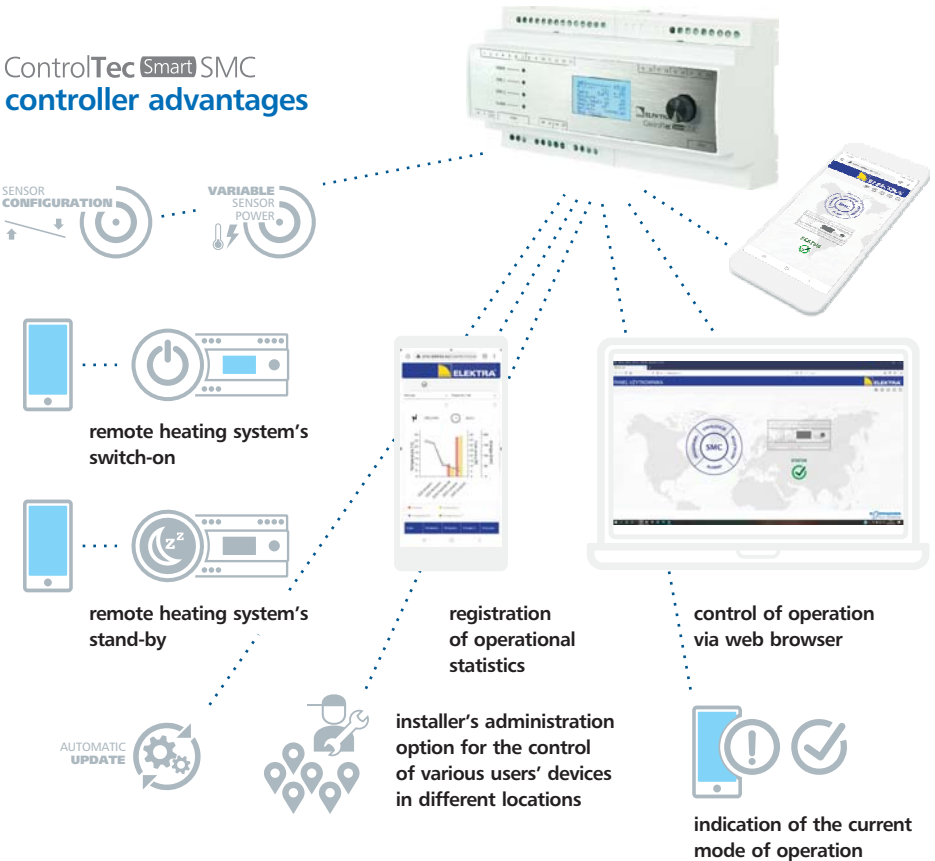


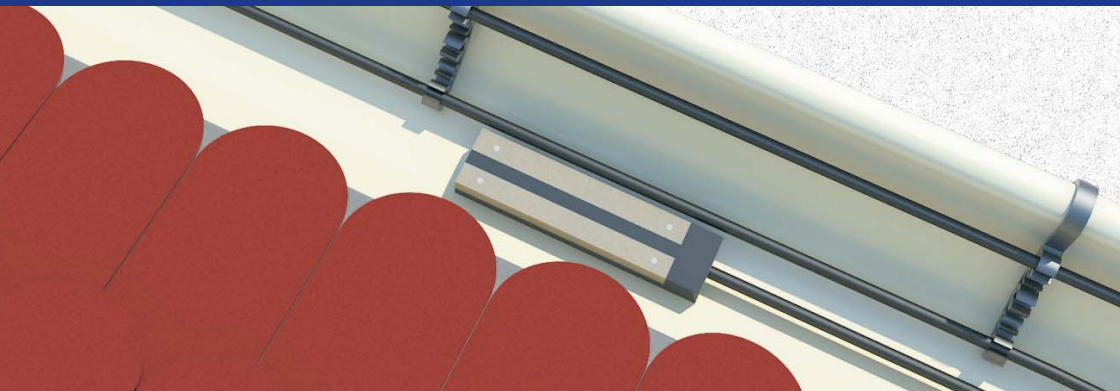
ControlTec **Smart** SMC controller basic functions

- temperature calibration
- failure detection and alarm
- stand-by mode for fast start-up in remote control
- heat on mode for forced heating
- automatic switch-on of the heating system after detection of snowfall or freezing rain

- compatibility with moisture detectors for gutters (ETOR-55), driveways and stairs (ETOG-56T), as well as temperature sensor (ETF-744)
- two independent heating zones with the joint operation mode option
- low temperature cut-off feature preventing ice deposition on roof edges

ControlTec **Smart** SMC controller advantages





> Technical data:

ControlTec Smart SMC

Power supply:	230 V ~50/60 Hz
Max. load:	2 x 16 A (potential free relays)
Installation:	DIN rail
Temperature range:	-25°C ÷ +50°C
Hysteresis:	0.3K
Ingress protection:	IP 20
Operation indicator:	LED
User control:	Multi-function knob control, web browser (desktop and mobile)
Working temperature:	-10°C ÷ +40°C
Dimensions (H x W x D):	90 x 177 x 72 mm
Modules:	10
WiFi:	20 MHz and 40 MHz 802.11 b/g/n (n - 2.4 GHz only) – 2400 – 2483.5 MHz 802.11n MCS0-7 for 20 MHz and 40 MHz
Ethernet port:	RJ-45
Product mark:	CE

ETF-744/99

Installation:	surface mounting
Ingress protection:	IP 54
Dimensions (H x W x D):	85 x 50 x 35 mm
Measurement:	air temperature
Temperature range:	-50°C ÷ +70°C

ETOR-55

Installation:	in gutter
Ingress protection:	IP 68
Dimensions (H x W x D):	107 x 26 x 15 mm
Measurement:	moisture
Temperature range:	-50°C ÷ +70°C
Heater output:	1-8 W

ETOG-56T

Installation:	in ground
Ingress protection:	IP 68
Dimensions (H x D):	30 x 60 mm
Measurement:	ground temperature and moisture
Temperature range:	-50°C ÷ +70°C
Heater output:	1-8 W

ELEKTRA

ul. Kamińskiego 4, 05-850 Ożarów Mazowiecki, Poland
phone +48 22 843 32 82, fax +48 22 843 47 52
e-mail: office@elektra.eu www.elektra.eu

